

M-SYSTEM®

Air cooled

3 MODELS WITH GUARANTEED PERFORMANCE

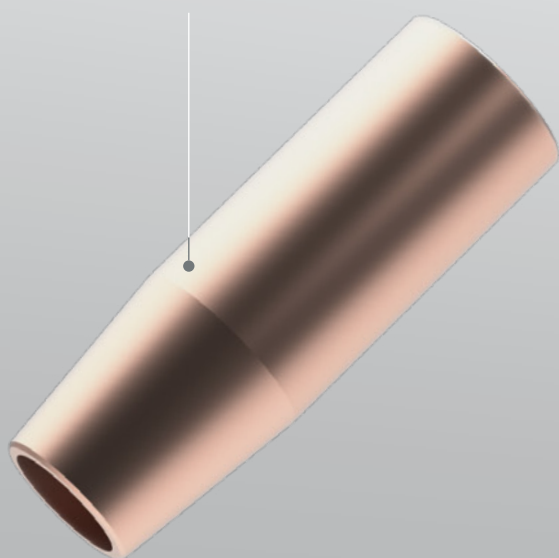
Air-cooled M-SYSTEM torches cover the entire range of 300, 400 and 500 Amps.

The specifications are certified with a **60% Duty Cycle (G.500 35%)**

G.300 / G.300 360°	Duty Cycle 60%	300 A Mix
	Length	3 m - 4 m - 4,6 m
G.400 / G.400 360°	Duty Cycle 60%	400 A Mix
	Length	3 m - 4 m - 4,6 m
G.500	Duty Cycle 35%	500 A Mix
	Length	3 m - 4 m - 4,6 m

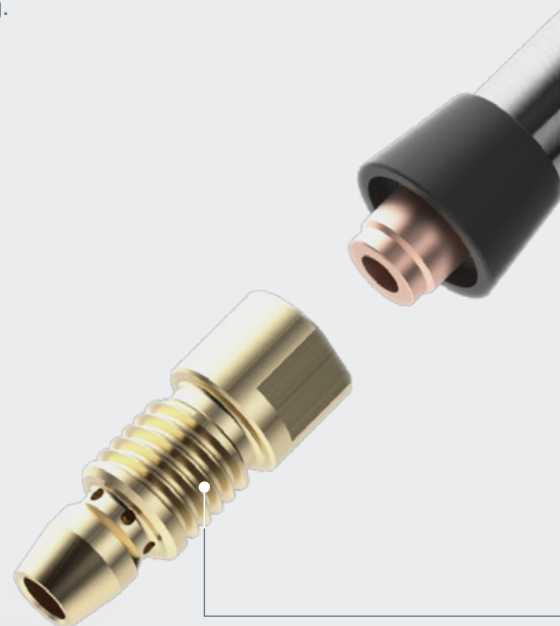
SPARE PARTS RESISTANT FOR LONG LIFE

M-SYSTEM torch consumables are original TRAFIMETs and represent the maximum in terms of sturdiness and durability. Precise grips and threads with increased dimensions ensure excellent flow passage and efficient heat dispersion.



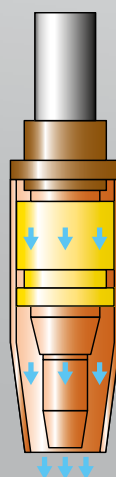
HEAT RESISTANCE

Heat dissipation capacity is achieved by new, increased and expanded fittings to increase torch cooling.



PATENTED COOLING SYSTEM

M-SYSTEM nozzles are made with a special shape that distributes gas in a laminar flow: this allows better cooling and optimum protection of the weld puddle due to the absence of turbulence. A very good welding quality is thus obtained with more ease.





NEW TORCH BODIES

The new M-SYSTEM torch bodies are made of aluminum alloys that combines lightness and strength.

Torch bodies are available in different lengths and degrees for different work situations.

SIMPLIFIED UNLOCK

M-SYSTEM diffusors are fixed to the nozzles with a right thread. To simplify unscrewing in case of a lock, the rear diffuser hinges are designed for gripping with a clamp or a fixed wrench.

360° ROTATING TORCH BODY

The new swivel torch body allows the welder to easily access hard to reach points such as channels or profiles typical of carpentry work.

