



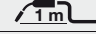



TPLUS 400

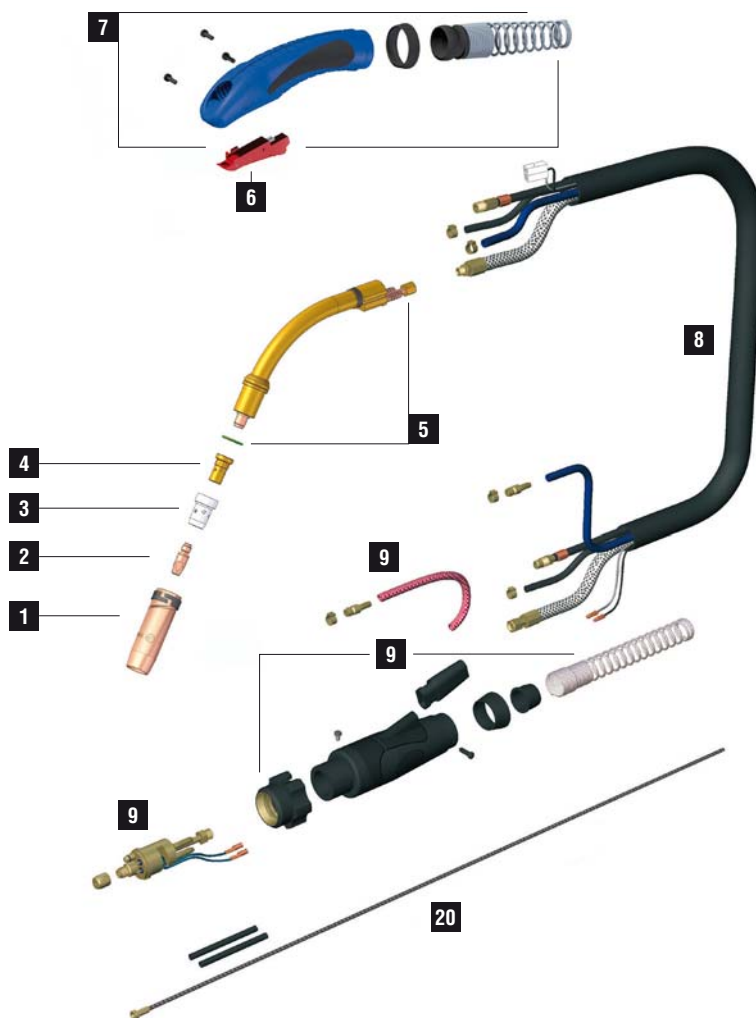


CODE	↔	☐
------	---	---

MB3623	3 m	10'	
MB3624	4 m	12'	
MB3625	5 m	16.4'	

TECHNICAL DATA

		
	1,45 kg	3,20 lb
V PEAK	113	
	1,0 ÷ 1,6 mm	.040" ÷ 1/16"
X 100%	400A CO2 - 350A Mix	
	2÷4 bar	
	1,6 l/min	



	CODE			Ø		↔	REF	
1	MC0268		2,5 mm	16 mm	5/8"	76 mm	145.0085	10
1	MC0276		light 2 mm	16 mm	5/8"	76 mm	145.0085	10
1	MC0290		2,5 mm	14 mm		76 mm	145.0132	10
1	MC0291		2,5 mm	20 mm		76 mm	145.0051	10
1	MC0292		2,5 mm	15 mm		76 mm	-	10
1	MC0293		2,5 mm	20 mm		82 mm	145.0179	10
1	MC0340		heavy duty 3 mm	16 mm	5/8"	76 mm	Heavy duty	10
1	MC0568		quick release 2,5 mm	16 mm	5/8"	76 mm	-	10
1	MC0576		quick release - light 2 mm	16 mm	5/8"	76 mm	-	10
2	MD0005-78		M8 - CuCrZr	0,8 mm	.030"	30 mm	-	20
2	MD0005-80		M8 - CuCrZr	1,0 mm	.040"	30 mm	140.0316	20
2	MD0005-82		M8 - CuCrZr	1,2 mm	.045"	30 mm	140.0445	20
2	MD0005-84		M8 - CuCrZr	1,4 mm	.052"	30 mm	-	20
2	MD0005-86		M8 - CuCrZr	1,6 mm	1/16"	30 mm	140.0590	20
3	ME0076		M8 - brass			25 mm	-	10
3	ME0083		M8 - brass			29 mm	-	10
3	ME0390		M8 - copper			25 mm	-	10
4	ME0074		plastic			28 mm	-	10
4	ME0079		plastic			29 mm	300029	10
4	ME0579		ceramic	16 mm	5/8"	28 mm	-	10
20	GM0530		uncoated steel liner	1,2 ÷ 1,6 mm	.045" ÷ 1/16"	3 m	10'	1
20	GM0531		uncoated steel liner	1,2 ÷ 1,6 mm	.045" ÷ 1/16"	4 m	12'	1
20	GM0532		uncoated steel liner	1,2 ÷ 1,6 mm	.045" ÷ 1/16"	5 m	16.4'	1

	CODE			CODE	CABLE		CODE	↔	CODE	↔			
5	FB1278			8	MN0085	3 m - 10' - 16 mm ²		8a	BX0156	3 m / 10'	8d	QB0076	3 m / 10'
5	MG0386		1	8	MN0086	4 m - 12' - 16 mm ²		8a	BX0157	4 m / 12'	8d	QB0077	4 m / 12'
6	BX0742			8	MN0087	5 m - 16.4' - 16 mm ²		8a	BX0158	5 m / 16.4'	8d	QB0078	5 m / 16.4'
7	MT0266			8a	Control leads			8b	QB0072	3 m / 10'	8e	QA0019	3 m / 10'
9	AR0052			8b	Wire conduit			8b	QB0073	4 m / 12'	8e	QA0020	4 m / 12'
9	BW0020			8c	Gas hose			8b	QB0074	5 m / 16.4'	8e	QA0021	5 m / 16.4'
9	FA0026			8d	Water inlet hose			8c	QB0080	3 m / 10'	8f	MQ0205	3 m / 10'
9	MT0101			8e	Water outlet power cable			8c	QB0081	4 m / 12'	8f	MQ0206	4 m / 12'
				8f	Cover			8c	QB0082	5 m / 16.4'	8f	MQ0207	5 m / 16.4'

STANDARD

FOR ALL CONSUMABLES SEE PAGE 294