

# TMAX 5001








CE EN60974-7

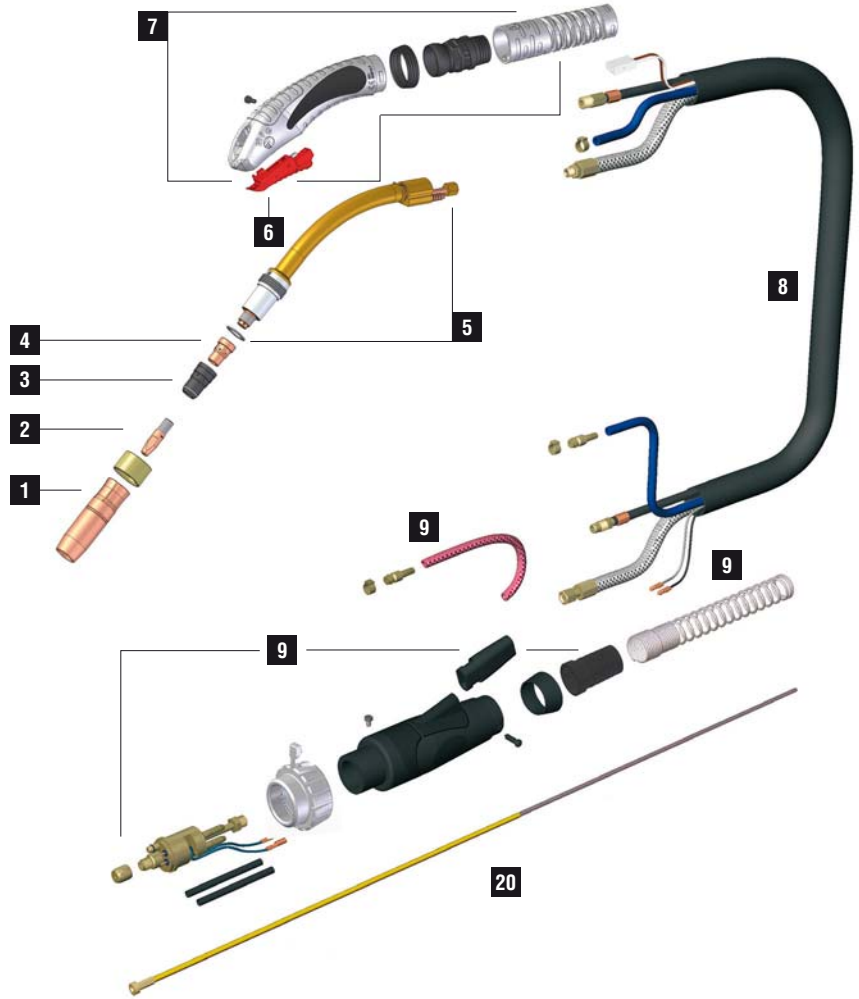


CODE	↔	☐
------	---	---

MB2443	3 m	10'	
MB2444	4 m	12'	
MB2445	5 m	16.4'	

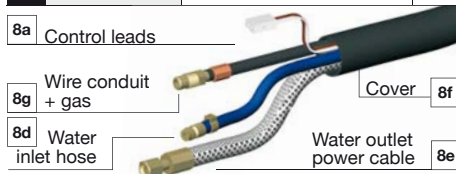
TECHNICAL DATA

		
	1,45 kg	3,20 lb
<b>V PEAK</b>	113	
	1,0 ÷ 2,4 mm	.030" ÷ 3/32"
<b>X 100%</b>	550A CO <sub>2</sub> - 500A Mix	
	2÷4 bar	
	1,6 l/min	



	CODE			Ø			↔	REF	
1	FA1110								1
1	MC0345			16 mm	5/8"	80 mm		-	5
1	MC0346			14 mm		80 mm		-	5
1	MC0347			19 mm	3/4"	80 mm		-	5
1	MC0348			15 mm		80 mm		-	5
2	MD0250-80		M9X1 - CuCrZr	1,0 mm	.040"	38 mm		-	20
2	MD0250-82		M9X1 - CuCrZr	1,2 mm	.045"	38 mm		-	20
2	MD0250-84		M9X1 - CuCrZr	1,4 mm	.052"	38 mm		-	20
2	MD0250-86		M9X1 - CuCrZr	1,6 mm	1/16"	38 mm		-	20
2	MD0250-90		M9X1 - CuCrZr	2,0 mm	5/64"	38 mm		-	20
2	MD0250-94		M9X1 - CuCrZr	2,4 mm	3/32"	38 mm		-	20
3	ME0345		M9X1 - copper			23,5 mm		-	5
4	ME0089		plastic			30 mm		-	10
4	ME0589		ceramic			30 mm		-	10
20	GM0540		yellow steel liner	1,2 ÷ 1,6 mm	.045" ÷ 1/16"	3 m	10'	124.0041	1
20	GM0541		yellow steel liner	1,2 ÷ 1,6 mm	.045" ÷ 1/16"	4 m	12'	124.0042	1
20	GM0542		yellow steel liner	1,2 ÷ 1,6 mm	.045" ÷ 1/16"	5 m	16.4'	124.0044	1

	CODE				CODE	CABLE			CODE	↔		CODE	↔	
5	FB2320		10		8	MN0080	3 m - 10' - 16 mm <sup>2</sup>		8a	BX0733	3 m / 10'	8f	MQ0205	3 m / 10'
5	MG0142		1		8	MN0081	4 m - 12' - 16 mm <sup>2</sup>		8a	BX0734	4 m / 12'	8f	MQ0206	4 m / 12'
6	BX0742				8	MN0082	5 m - 16.4' - 16 mm <sup>2</sup>		8a	BX0735	5 m / 16.4'	8f	MQ0207	5 m / 16.4'
7	BW0265		10		8a	Control leads			8d	QB0076	3 m / 10'	8g	QB0090	3 m / 10'
7	MT0261				8g	Wire conduit + gas			8d	QB0077	4 m / 12'	8g	QB0091	4 m / 12'
9	AR0102				8d	Water inlet hose			8d	QB0078	5 m / 16.4'	8g	QB0092	5 m / 16.4'
9	BW0480								8e	QA0019	3 m / 10'			
9	FA0026		10						8e	QA0020	4 m / 12'			
9	MT0101		1						8e	QA0021	5 m / 16.4'			



8a	BX0733	3 m / 10'	8f	MQ0205	3 m / 10'
8a	BX0734	4 m / 12'	8f	MQ0206	4 m / 12'
8a	BX0735	5 m / 16.4'	8f	MQ0207	5 m / 16.4'
8d	QB0076	3 m / 10'	8g	QB0090	3 m / 10'
8d	QB0077	4 m / 12'	8g	QB0091	4 m / 12'
8d	QB0078	5 m / 16.4'	8g	QB0092	5 m / 16.4'
8e	QA0019	3 m / 10'			
8e	QA0020	4 m / 12'			
8e	QA0021	5 m / 16.4'			

STANDARD

FOR ALL CONSUMABLES SEE PAGE 294