

# TMAX 400



CODE	↔	
------	---	--

MA6385	3 m	10'	
MA6386	4 m	12'	
MA6387	4,6 m	15'	

MA6395T	4 m	12'	
MA6394T	3 m	10'	
MA6396T	4,6 m	15'	

MA6394M	3 m	10'	
MA6395M	4 m	12'	
MA6396M	4,6 m	15'	

MA6394L	3 m	10'	
MA6395L	4 m	12'	
MA6396L	4,6 m	15'	

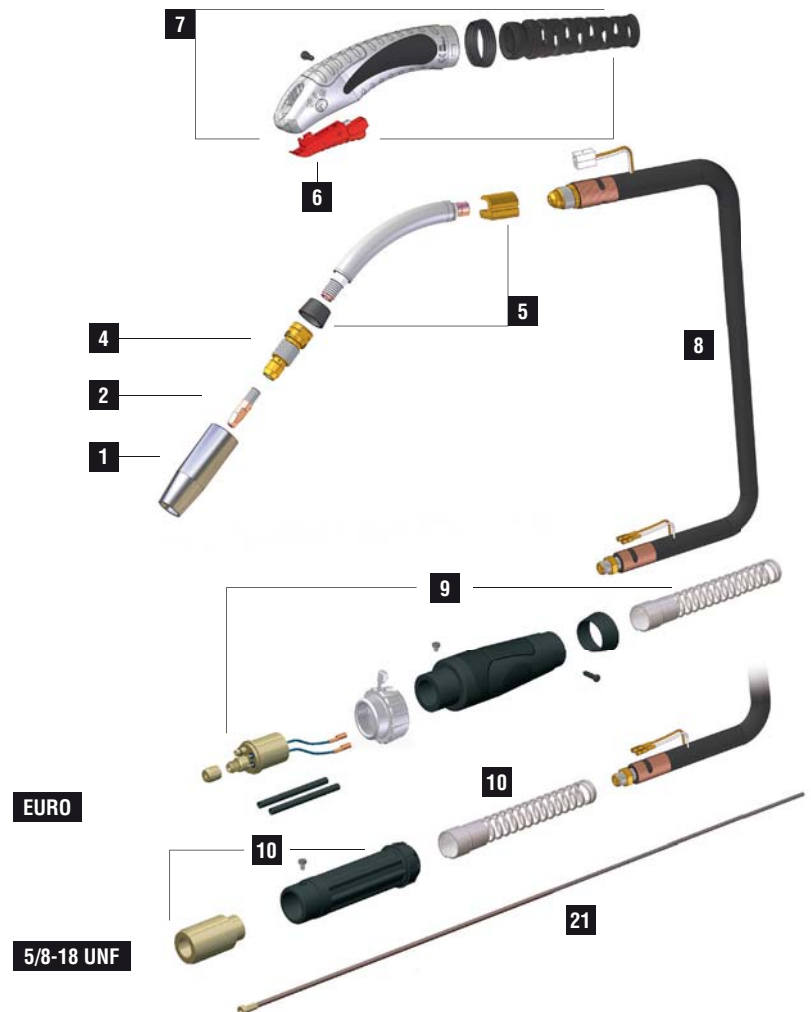
CODE	↔	
------	---	--

MA6394	3 m	10'	
MA6395	4 m	12'	
MA6396	4,6 m	15'	

<b>+</b>	
AR0170	Tweco® 1/4 KIT
AR0172	Lincoln® KIT
AR0173	Miller® KIT
KIT to be assembled by a qualified technician	

TECHNICAL DATA		
----------------	--	--

	1,3 kg	2.87 lb
<b>V PEAK</b>	113	
	0,8 ÷ 1,6 mm	.030" ÷ 1/16"
<b>X 60%</b>	450A CO2 - 400A Mix	



**EURO**

**5/8-18 UNF**

	CODE			Ø			REF	
1	MC0011			16 mm	5/8"	82 mm	-	5
1	MC0012			18 mm		82 mm	-	5
1	MC0013			20 mm		82 mm	-	5
1	MC0298			14 mm		82 mm	-	5
2	MD0250-78		M9X1 - CuCrZr	0,8 mm	.030"	38 mm	-	20
2	MD0250-79		M9X1- CuCrZr	0,9 mm	.035"	38 mm	-	20
2	MD0250-80		M9X1- CuCrZr	1,0 mm	.040"	38 mm	-	20
2	MD0250-82		M9X1- CuCrZr	1,2 mm	.045"	38 mm	-	20
2	MD0250-84		M9X1- CuCrZr	1,4 mm	.052"	38 mm	-	20
2	MD0250-86		M9X1- CuCrZr	1,6 mm	1/16"	38 mm	-	20
2	MD0250-90		M9X1- CuCrZr	2,0 mm	5/64"	38 mm	-	20
2	MD0250-94		M9X1- CuCrZr	2,4 mm	3/32"	38 mm	-	20
4	ME0367		M9X1 - brass			51 mm	-	5
21	GM0013		grey steel liner	1,2 ÷ 1,6 mm	.045" ÷ 1/16"	5 m	16.4'	44-116-15 1

	CODE				CODE		
5	FB0653				8	MH0475	4,6 m - 15' - 50 mm <sup>2</sup>
5	MF0367		mig torch head	1	9	AR0083	EURO TW
5	MQ0340		insulator		9	BW0480	Euro nut
6	BX0742		trigger		9	FA0027	liner nut M11X1
7	MT0260		handle kit		9	MT0077	Back box kit
8	MH0473		3 m - 10' - 50 mm <sup>2</sup>		10	FB0395	5/8-18 UNF
8	MH0474		4 m - 12' - 50 mm <sup>2</sup>		10	MT0228	Back box kit 5/8-18 UNF 1

STANDARD

FOR ALL CONSUMABLES SEE PAGE 294