




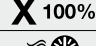




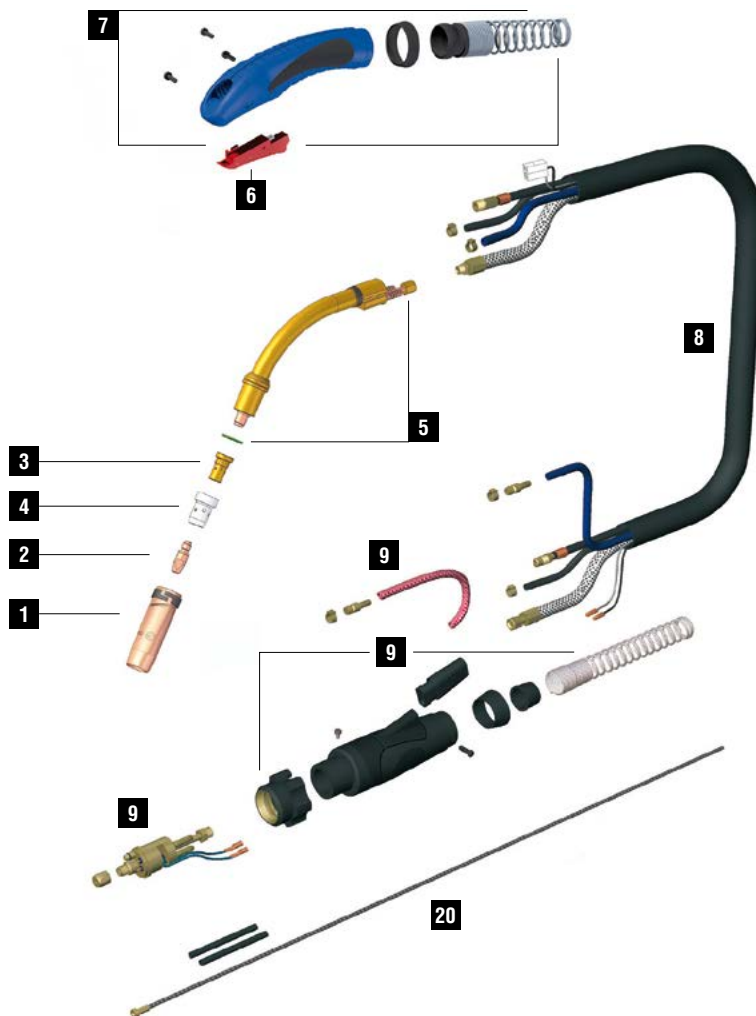
TPLUS 400

CE EN60974-7



CODE	↔		
MB3623	3 m	10'	 EURO
MB3624	4 m	12'	
MB3625	5 m	16.4'	

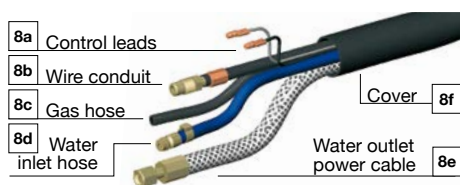
TECHNICAL DATA		
TPLUS 400		
	1,45 kg	3.22 lb
	113	
	1,0 ÷ 1,6 mm	.040" ÷ 1/16"
	400A CO2 - 350A Mix	
	2÷4 bar	
	1,6 l/min	



	CODE			Ø		↔	REF		
1	MC0268		nozzle - 2,5 mm thickness	16 mm	5/8"	76 mm	3"	145.0085	10
1	MC0276		nozzle - 2 mm thickness	16 mm	5/8"	76 mm	3"	145.0085	10
1	MC0290		nozzle - 2,5 mm thickness	14 mm	9/16"	76 mm	3"	145.0132	10
1	MC0291		nozzle - 2,5 mm thickness	20 mm	25/32"	76 mm	3"	145.0051	10
1	MC0292		nozzle - 2,5 mm thickness	15 mm	19/32"	76 mm	3"	-	10
1	MC0293		nozzle - 2,5 mm thickness	20 mm	25/32"	82 mm	3-7/32"	145.0179	10
1	MC0340		heavy duty nozzle - 3 mm thickness	16 mm	5/8"	76 mm	3"		10
1	MC0568		quick release nozzle - 2,5 mm thickness	16 mm	5/8"	76 mm	3"	-	10
1	MC0576		quick release light nozzle - 2 mm thickness	16 mm	5/8"	76 mm	3"	-	10
2	MD0005-78		M8 - CuCrZr	0,8 mm	.030"	30 mm	1"-3/16	-	20
2	MD0005-80		M8 - CuCrZr	1,0 mm	.040"	30 mm	1"-3/16	140.0316	20
2	MD0005-82		M8 - CuCrZr	1,2 mm	.045"	30 mm	1"-3/16	140.0445	20
2	MD0005-84		M8 - CuCrZr	1,4 mm	.052"	30 mm	1"-3/16	140.0536	20
2	MD0005-86		M8 - CuCrZr	1,6 mm	1/16"	30 mm	1"-3/16	140.0590	20
3	ME0076		M8 - brass			25 mm	31/32"	-	10
3	ME0083		M8 - brass			29 mm	1"-5/32	-	10
3	ME0390		M8 - copper			25 mm	31/32"	-	10
4	ME0074		plastic			28 mm	1"-3/32	-	10
4	ME0079		plastic			29 mm	1"-5/32	300029	10
4	ME0579		ceramic	16 mm	5/8"	28 mm	1"-3/32	-	10
20	GM0530		uncoated steel liner	1,2 ÷ 1,6 mm	.045" ÷ 1/16"	3 m	10'		1
20	GM0531		uncoated steel liner	1,2 ÷ 1,6 mm	.045" ÷ 1/16"	4 m	12'		1
20	GM0532		uncoated steel liner	1,2 ÷ 1,6 mm	.045" ÷ 1/16"	5 m	16.4'		1

	CODE			
5	FB1278		insulator	10
5	MG0386		Tplus 400 torch head	1
6	BX0742		trigger	1
7	MT0266		handle kit	1
8	MN0085		cable assembly - 3 m / 10'	1
8	MN0086		cable assembly - 4 m / 12'	1

	CODE			
8	MN0087		cable assembly - 5 m / 16.4'	1
9	AR0052		EURO connector	1
9	BW0020		metal EURO nut	10
9	FA0026		liner nut M10x1	10
9	MT0101		Back box kit	1



	CODE	↔
8a	BX0156	3 m / 10'
8b	QB0072	3 m / 10'
8c	QB0080	3 m / 10'
8d	QB0076	3 m / 10'
8e	QA0019	3 m / 10'
8f	MQ0205	3 m / 10'

	CODE	↔
8a	BX0157	4 m / 12'
8b	QB0073	4 m / 12'
8c	QB0081	4 m / 12'
8d	QB0077	4 m / 12'
8e	QA0020	4 m / 12'
8f	MQ0206	4 m / 12'

	CODE	↔
8a	BX0158	5 m / 16.4'
8b	QB0074	5 m / 16.4'
8c	QB0082	5 m / 16.4'
8d	QB0078	5 m / 16.4'
8e	QA0021	5 m / 16.4'
8f	MQ0207	5 m / 16.4'

STANDARD FOR ALL WEAR PARTS SEE PAGE 276