



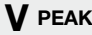




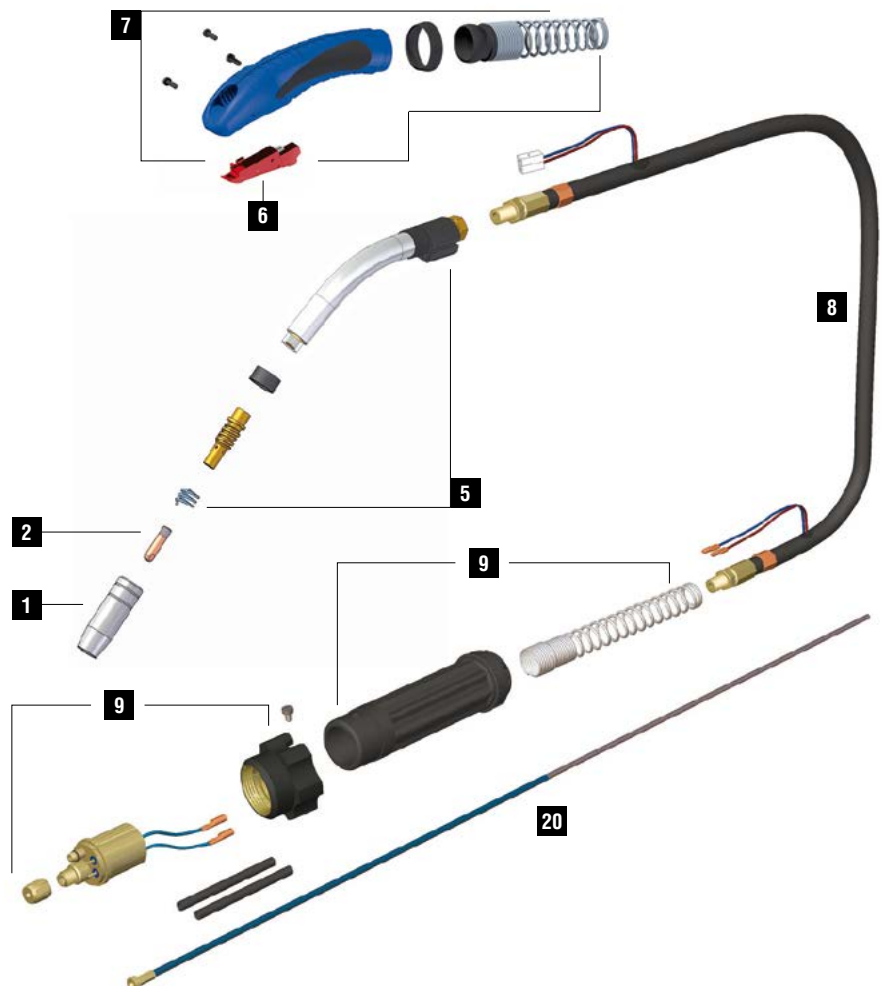
# TPLUS 15

CE EN60974-7



CODE	↔		
MA3033	3 m	10'	 EURO
MA3034	4 m	12'	
MA3035	5 m	16.4'	

TECHNICAL DATA		
	TPLUS 15	
	0,65 kg	1.43 lb
	113	
	0,6 ÷ 1,0 mm	.023" ÷ .045"
	180A CO2 - 150A Mix	



	CODE			Ø		↔		REF	
1	MC0017		nozzle	9,5 mm	3/8"	53 mm	2-1/16"	145.0123	10
1	MC0018		nozzle	12 mm	1/2"	53 mm	2-1/16"	145.0075	10
1	MC0019		nozzle	16 mm	5/8"	53 mm	2-1/16"	145.0041	10
1	MC0020		nozzle	16 mm	5/8"	61,5 mm	2"-13/32	145.0168	10
1	MC0266		nozzle	13 mm	1/2"	53 mm	2-1/16"	145.0143	10
2	MD0008-06		M6 - Cu	0,6 mm	.023"	25 mm	31/32"	140.0008	20
2	MD0008-08		M6 - Cu	0,8 mm	.030"	25 mm	31/32"	140.0059	20
2	MD0008-09		M6 - Cu	0,9 mm	.035"	25 mm	31/32"	140.0177	20
2	MD0008-10		M6 - Cu	1,0 mm	.040"	25 mm	31/32"	140.0253	20
2	MD0008-12		M6 - Cu	1,2 mm	.045"	25 mm	31/32"	140.0387	20
20	GM0500		blue steel liner	0,6 ÷ 0,9 mm	.023" ÷ .035"	3 m	10'	124.0011	1
20	GM0501		blue steel liner	0,6 ÷ 0,9 mm	.023" ÷ .035"	4 m	12'	124.0012	1
20	GM0502		blue steel liner	0,6 ÷ 0,9 mm	.023" ÷ .035"	5 m	16.4'	124.0015	1

	CODE			
5	EA0303		spring	10
5	FB0117		mig diffuser	10
5	MF0380		Tplus 15 torch head	1
5	MQ0093		insulator	1
6	BX0742		trigger	1
7	MT0265		handle kit	1
8	MH0118		coaxial cable - 3 m / 10'	1

	CODE			
8	MH0121		coaxial cable - 4 m / 12'	1
8	MH0122		coaxial cable - 5 m / 16.4'	1
9	AR0070		EURO connector - air	1
9	BW0020		metal EURO nut	10
9	FA0026		liner nut M10x1	10
9	MT0229		Back box kit EURO	1

STANDARD

FOR ALL WEAR PARTS SEE PAGE 276